



# Prince George's County Board of Health Presentation

**February 2, 2021**

Doctors Community  
Medical Center

# Today's Speakers:



**Tori Bayless**  
CEO,  
Luminis Health



**Deneen Richmond**  
President,  
Luminis Health  
Doctors  
Community  
Medical Center



**Rod Kornrumpf**  
VP Behavioral  
Health,  
Luminis Health  
Anne Arundel  
Medical Center



**Monica Jones, MD**  
Chair,  
Luminis Health  
Women's and  
Children's  
Service Line



**Regina Hampton, MD**  
President,  
Medical Staff,  
Luminis Health  
Doctors Community  
Medical Center

# Luminis Health Facts and Figures



**3** Hospitals  
**7** Counties



**\$1.1 Billion**  
Operating revenue



**6,500+**  
Employees



**611** Total licensed bed  
(Includes 40-bed facility,  
Pathways, dedicated to  
substance use and mental  
health treatment)



**35,406**  
Inpatient admissions



**1,430**  
Volunteers



**156,054**  
Emergency visits



**1,770**  
Medical Staff



**\$66 Million**  
Community benefit

Combined data on Luminis Health Anne Arundel Medical Center and Luminis Health Doctors Community Medical Center from Fiscal Year 2019 (July 2018-June 2019), plus McNew beds



# Prince George's County Board of Health Presentation

Behavioral Health Services

Doctors Community  
Medical Center



# BEHAVIORAL HEALTH SYSTEM OVERVIEW AND RECOMMENDATIONS

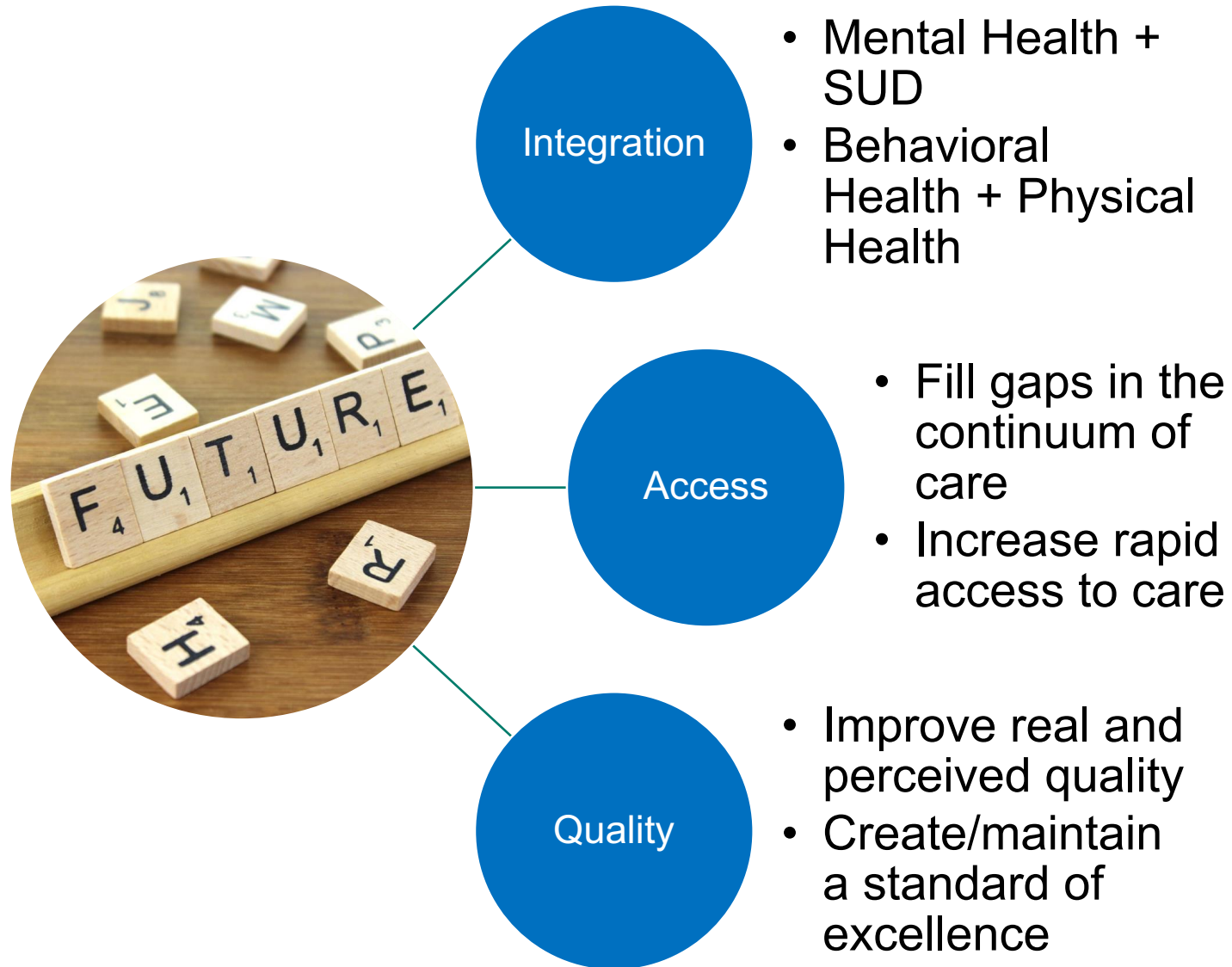


**Billina R. Shaw, MD, FAPA**

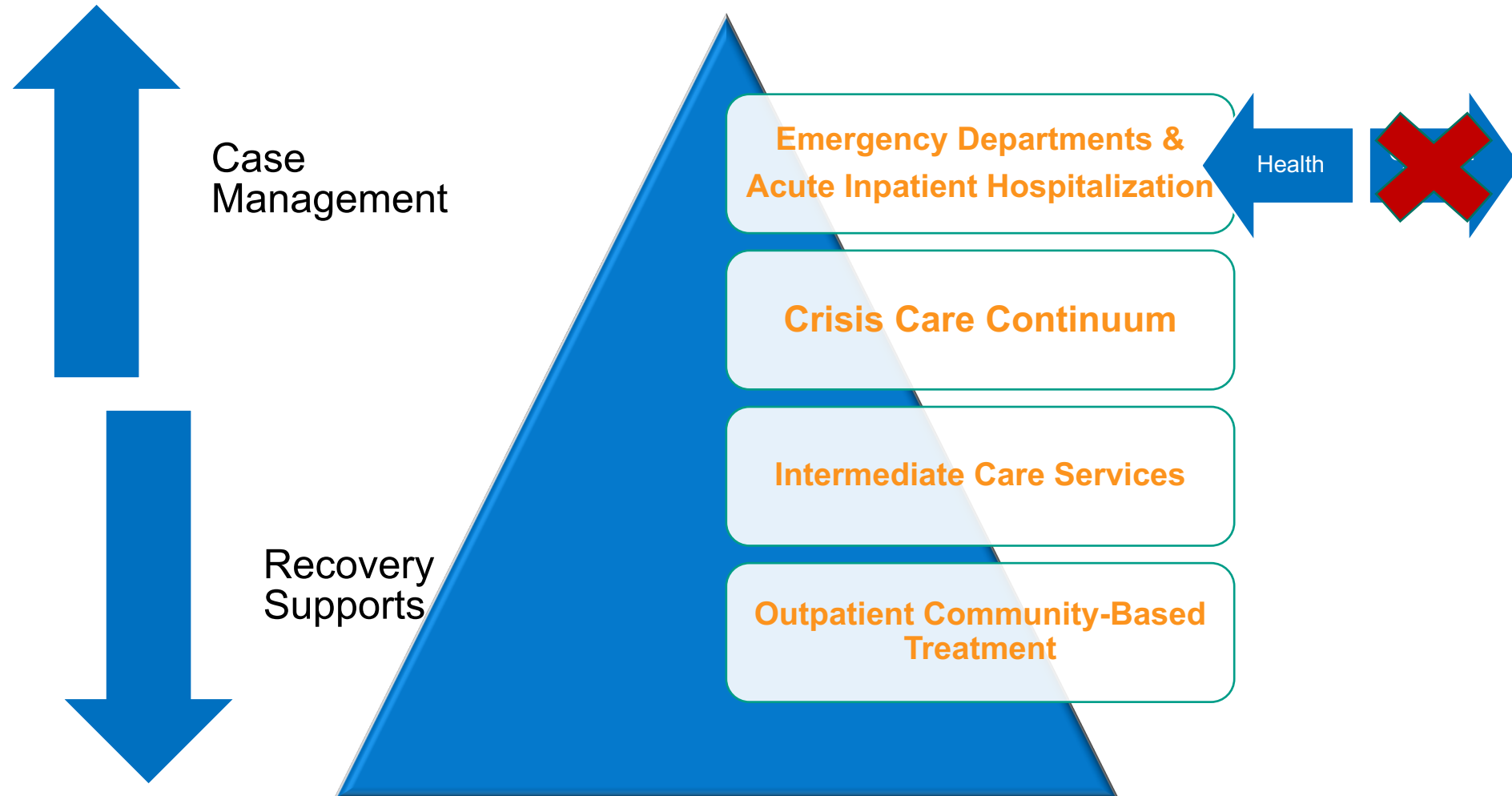
Medical Director  
Behavioral Health Services Division



# Behavioral Strategic Goals



# Behavioral Health Continuum of Care



# Did You Know?

Your mental health affects how you think, feel and act. It impacts how you handle stress, relate to others, and how you make choices.

When things happen in your life such as COVID, losing your job or your place to live, it affects how you feel and your ability to cope.

Alcohol and drug use impacts your relationships with your friends and family. Recovery involves healing all relationships.

It's ok to talk about how you feel. Sometimes life becomes hard. Asking for help is ok. Taking care of your mental health is important.





# Bringing Care Close to Home

## Behavioral Health

2019 CHNA identified behavioral health as an unmet need for County residents.

Develop a continuum of behavioral health services on the Lanham Campus providing local access to acute care services for patients in mental health and substance use disorder crisis.

- 1<sup>st</sup> Floor: Outpatient services
  - Intensive Outpatient
  - Outpatient Mental Health Clinic
  - Psychiatric Day Hospital Program
  - Residential Crisis
  - Urgent Care
- 2<sup>nd</sup> Floor: Inpatient services
  - 16 bed adult unit



### Timeline

- Outpatient services December 2021
- Inpatient CON submitted Spring 2021





**Your support is needed**





# Prince George's County Board of Health Presentation

Women's Services and  
Campus Improvement

Doctors Community  
Medical Center

# Did You Know?

Each year, the need for quality obstetrics care in Prince George's County grows.

The county birth rate exceeds the state rate driving the need for additional obstetrics care.

The county has one of the highest infant mortality rates in Maryland with the highest rate noted for non-Hispanic, African-American deliveries.





# Bringing Care Close to Home

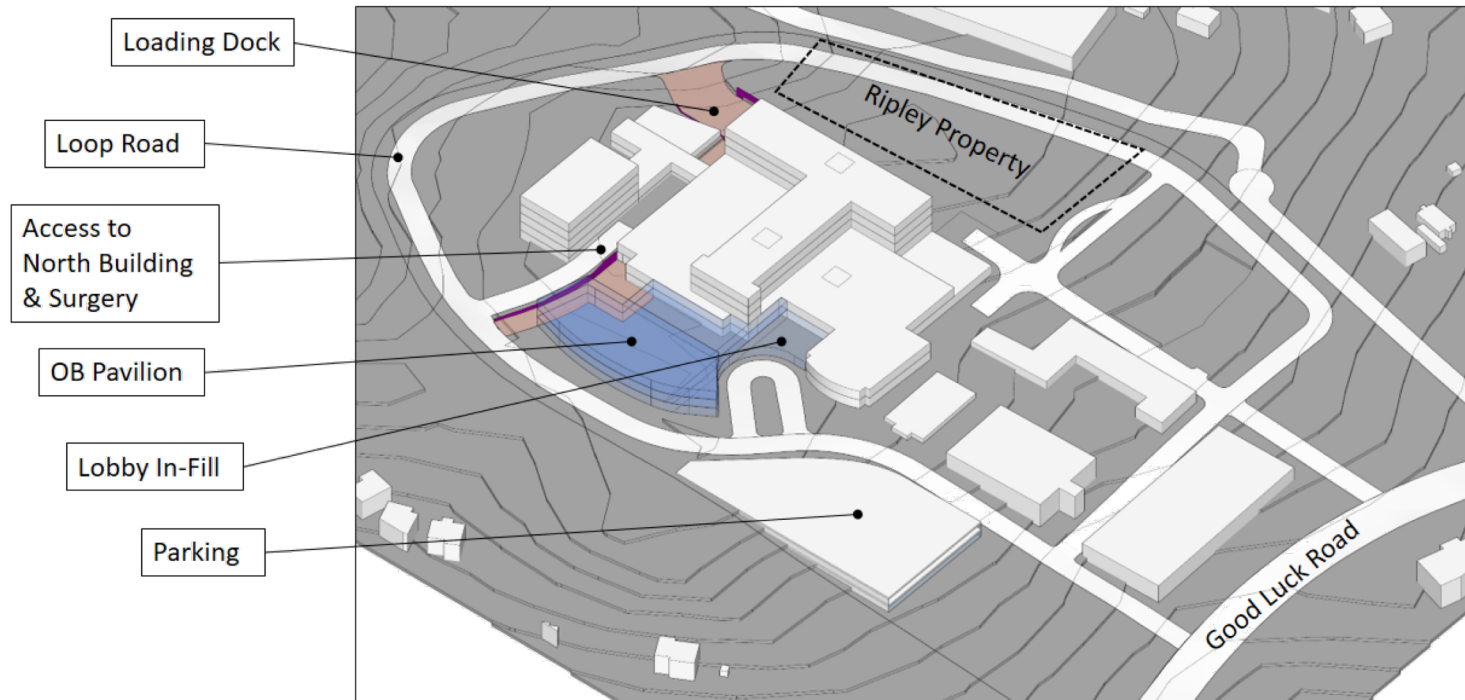
## Obstetrics



- More than 80% of babies delivered outside of Prince George's County
- Expand access to all women's health services through existing and new providers
- Partnership with Children's National and Level II nursery onsite

# Bringing Care Close to Home

## Obstetrics



### Program Design

- 2,500 deliveries
- 12 L&D/Birthing Center/ Antepartum
- 2 operating rooms
- 24 post partum
- Level II nursery

### Timeline

- Inpatient CON Submitted Spring 2021
- First baby delivered 2024





**Your support is needed**

# Behavioral Health – Certificate of Need

The following is a fact sheet summarizing Behavioral Health CON

## Behavioral Health Goals

- Establish a 16-bed adult psychiatric unit as part of a comprehensive program for both mental health and substance use disorder on the Luminis Health Doctors Community Medical Center campus that will:
  - improve acute care access.
  - expand the continuum of mental health services and support services;
  - improve health outcomes; and
  - lower cost of care.
- Provide local access to acute care services for patients in mental health and substance use disorder crisis.
- Provide a comprehensive behavioral health program with local access to outpatient services and step-down care.
- Increase the number of clinicians in Prince George's County to respond to the severe shortage of mental health professionals.
- Create a collaborative program with the Prince George's County government and other partners in the community.

## Facilities

The building that will be used for Behavioral Health is proximal to the current Emergency Department. The facility will include:

### 1st Floor: Outpatient Services

- Outpatient Mental Health Clinic
- 6 bay Walk-in Urgent Care
- Psychiatric Day Hospital/ partial hospitalization program
- Intensive Outpatient Treatment (IOP)

### 2nd floor: Inpatient services

- 16 bed adult care

## Timeline

- Outpatient Services Completed by December 2021
- CON application for Inpatient Services **submitted** by April 2021

# Campus Improvement and Women's Health

The following is a fact sheet summarizing Campus Improvement and Women's Health CON

Our goal is to provide needed access and compassionate care to our community by expanding and renovating the Doctors Community Medical Center facilities.

## Women's Services Goals

- Respond to the need in Prince George's County for a delivery site close to home.
- Reallocate resources to improve access, meet local demand, increase patient satisfaction.
- Improve access to achieve improved maternal and infant outcomes.
- Improve management of chronic conditions to minimize risks and improve maternal health outcomes.
- Attract more quality physicians to Prince George's County

## Obstetrics:

LHDCMC will develop an obstetric program that will deliver 2,500 births annually. Included:

- Labor and Delivery and Mother/Baby Units will cover two floors of the new pavilion
- 36 licensed beds
- Two dedicated C-Section operating rooms
- Affiliated sterile processing capacity
- Level II Special Care Nursery

## Capital Improvement

### Facilities:

LHDCMC proposes to expand, upgrade, and renovate the existing hospital building as follows:

- Facility expansion proposed is a four-story building.
- First floor will allow for expansion and renovation of support services to include:
  - Laboratory
  - Pharmacy
  - Central sterile processing
  - Food and nutrition
  - Loading dock
- Floors two and three will accommodate inpatient space for the proposed new obstetrical services
- Facility improvements also include site work, such as roads and additional parking
- Fourth Floor consists of a mechanical penthouse

## Timeline:

- Inpatient Bed **Submission** of CON Application Spring 2021
- First baby delivered 2024

## DRAFT LETTER OF SUPPORT BOARD OF HEALTH

Kevin McDonald, Chief  
Certificate of Need  
Maryland Health Care Commission  
4160 Patterson Avenue  
Baltimore, Maryland 21215-2299

Subject: Letter of Support – Luminis Health Doctors Community Medical Center’s Certificate-of-Need Application, Behavioral Health

Dear Mr. McDonald:

As BOARD OF HEALTH OFFICER for Prince George’s County, I appreciate the opportunity to offer my support for the Luminis Health Doctors Community Medical Center’s (LHDCMC) Certificate Of Need (CON) application to establish Behavioral Health Services on its campus in Lanham as part of a comprehensive mental health program including 16 adult inpatient beds (CON required) and outpatient services (non-CON).

LHDCMC has a history of providing high-quality and compassionate care to meet the growing needs of area residents. As Behavioral Health Services needs have increased in the community, I’m excited to learn that LHDCMC has plans to create a comprehensive Behavioral Health Program. The need for a Behavioral Health Program has been well documented. The 2019 Community Health Needs Assessment conducted by Prince George’s County, residents ranked mental health services as the 2nd most important issue to them.

The hospital’s proposed comprehensive Behavioral Health Program will provide local direct access to a continuum of mental health services including emergency, acute and transitional care. It will create a collaborative program with the Prince George’s County government and other partners in the community.

I understand and appreciate that The Maryland Health Care Commission (MHCC) must approve hospitals’ plans to develop a comprehensive hospital inpatient Behavioral Health program. I fully support this project and hope the MHCC understands how much this initiative will contribute to the overall health of Prince George’s County residents.

Thank you in advance for your consideration.

Sincerely,  
Signature  
Printed Name

cc: Luminis Health Doctors Community Medical Center

## DRAFT LETTER OF SUPPORT BOARD OF HEALTH

Kevin McDonald, Chief  
Certificate of Need  
Maryland Health Care Commission  
4160 Patterson Avenue  
Baltimore, Maryland 21215-2299

Subject: Letter of Support – Luminis Health Doctors Community Medical Center’s Certificate-of-Need Application, Obstetrics Services

Dear Mr. McDonald:

As BOARD OF HEALTH OFFICER, I appreciate the opportunity to offer my support for the Luminis Health Doctors Community Medical Center’s (LHDCMC) certificate-of-need application to establish obstetrics services on its campus in Lanham as part of a comprehensive women’s health program.

LHDCMC has a history of providing high-quality and compassionate care to meet the growing needs of area residents. As my hospital of choice, I’m excited to learn that LHDCMC has plans to offer increased women’s health services and a campus improvement plan.

The 2019 Community Health Needs Assessment stated that approximately eight in 10 babies are delivered outside of Prince George’s County. That continuing trend highlights the significant need for more obstetrics and related services in our area. The hospital’s proposed women’s health program will enable more women to deliver their babies closer to where they live and work. The new program will also enhance both prenatal and postnatal care, helping mothers and babies maintain and improve their overall health and well-being.

I understand and appreciate that The Maryland Health Care Commission (MHCC) must approve hospitals’ plans to develop obstetrics programs. I fully support this project and hope the MHCC understands how much this initiative will contribute to the overall health of Prince George’s County residents.

Thank you in advance for your consideration.

Sincerely,  
Signature  
Printed Name

cc: Luminis Health Doctors Community Medical Center